

# PARENT PLANNER

## TERM 1 2026



YEAR  
3

## WELCOME TO TERM 1

Welcome Year 3 families to an exciting and enriching year of learning. We are so thrilled to have your child in our class this year. As we embark on this new adventure together, we want to thank you for your continued support and partnership. Together, we will foster a love for learning, curiosity, and creativity that will make this year, a year to thrive. Throughout the year, we will be diving into new units of work, exploring fun projects, and developing skills that will help your child grow both academically and personally. Our goal is to make this year enjoyable, engaging, and full of opportunities to shine.

## MEET THE TEAM

Amanda Radford  
3A Room 25

[Amanda.Radford@education.vic.gov.au](mailto:Amanda.Radford@education.vic.gov.au)



Sandra Hosking  
3D Room 28

[Sandra.Hosking@education.vic.gov.au](mailto:Sandra.Hosking@education.vic.gov.au)



Erin Woodhouse  
3B Room 26

[Erin.Woodhouse@education.vic.gov.au](mailto:Erin.Woodhouse@education.vic.gov.au)



Rebecca Dowell  
3D Room 28

[Rebecca.Dowell@education.vic.gov.au](mailto:Rebecca.Dowell@education.vic.gov.au)



Nick Oakey  
3C Room 27

[Nicholas.Oakey@education.vic.gov.au](mailto:Nicholas.Oakey@education.vic.gov.au)



Nick Hull  
Learning Specialist

[Nick.Hull@education.vic.gov.au](mailto:Nick.Hull@education.vic.gov.au)



## ATTENDANCE

Students are expected to be at school every day unless they are sick.

Parents are asked to record absences via the Compass Parent Portal, email the school email account, call the office or provide a note explaining the reason for the absence.

## UNIFORM

Uniform must be worn in full every day. Students not in uniform may be asked to change at the office in the morning. Please refer to the Uniform Policy on our website.

Our uniform supplier is PSW. You can shop in Campbellfield, online, arrange home delivery or click and collect.

<https://www.psw.com.au/schools/wallan-primary-school.html>

Families may choose to purchase generic uniforms, in the school colours, from department stores.

## LATE ARRIVALS

School gates open at 8:30am and classrooms are open at 8.45am. Students are expected to be at school on time, every day, to ensure they do not miss the beginning of the learning focus.

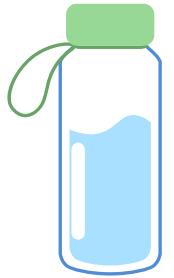
If your child is late to school, a parent/guardian must walk them to the office and sign them in.

# IMPORTANT REMINDERS

## WATER BOTTLES

Students are required to bring their own water bottle. Water can be consumed at any time during the day.

Food and non water drinks can only be consumed at designated eating times.



## SUN SMART

Wide brimmed, legionaries or bucket hats must be worn from 15th August to 30th April. Generic hats can be worn as long as they are a sun smart style – no caps. Students without hats must stay under shaded areas.

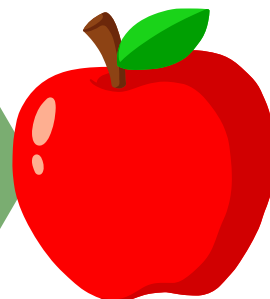
Staff are expected to model sun smart behaviours at all times. Sun cream is encouraged but must be applied by students independently.



## HEALTHY SNACK

Healthy snacks can be consumed in the classroom at a suitable time, decided upon by the teacher.

Healthy snacks include fruit and vegetables that can be eaten easily whilst students work.



# VISUAL ART

During Term 1, students are learning about the Chinese New Year lantern festival by making their own paper lantern. They will learn about floating ink on water and how to make marbled paper then use this paper to construct their lantern. Some textile skills such as tying and threading wool will be explored with the addition of how to make a woollen tassel.

Please remember to bring in a clearly named art smock for those messy lessons.



# PHYSICAL EDUCATION

The focus in PE for this term is Cricket

Students will begin learning the rules and mechanics of cricket. We will explore fielding, batting and bowling which lead to a series of engaging cricket-based games!



# SPECIALISTS



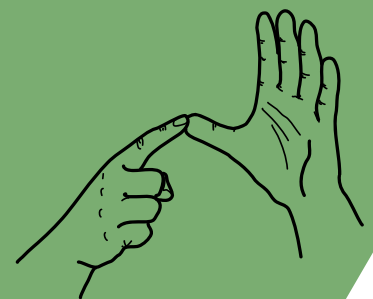
# FOOD

This term in Food, students will be introduced to the processes in our school kitchen. We will be learning all about hygiene and safety when cooking. Students will also get the opportunity to help care for our school vegetable garden.



# AUSLAN

During Term 1 students will be extending their knowledge of Auslan and the Deaf community and developing their signing skills. The lessons will focus on routine classroom signs, short sentences, greetings and continue practicing signs relating to fingerspelling, colour and feelings.



# THIS TERM IN.....



## NUMERACY

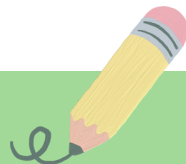
In Numeracy this term, students will be focusing on developing their knowledge of recognising, reading, writing and ordering numbers. They will continue to develop their knowledge of place value and the importance of place value in addition and subtraction. Students will work on telling the time on both an analogue and digital clock and understand the relationship between days, hours, minutes etc. They will also continue to develop their knowledge of shape and location.

## CORE LITERACY



In Core Literacy this term, students will focus on the four key areas of phonics, handwriting, reading fluency and comprehension. Students will continue their phonics journey by revising the phonemes and graphemes learned over the past three years, with a focus on choosing the correct spelling patterns for sounds that have more than one grapheme.

In handwriting, students will continue to develop correct letter formation, size and neatness. In reading fluency, students will practise reading aloud smoothly and accurately, building expression and pace to support understanding and comprehension of texts studied.



## ENGLISH

In English this term, students will study the novel *Matilda* by Roald Dahl. Through this text, students will develop their understanding of vocabulary, story writing, and explore characters, settings and key events. They will discuss and compare connections within the novel and use their knowledge to answer questions and deepen comprehension.

Students will focus on writing narrative and persuasive texts based on the novel *Matilda*, using the correct text structure, punctuation and engaging vocabulary to enhance their writing.

## INQUIRY



In Inquiry this term, we will be exploring the "Our Dynamic Community". Students will investigate how communities' function and change over time, the roles of people within a community, and how individuals can contribute positively. Through hands-on activities, discussions and projects, students will develop their understanding of community connections and responsibilities.

# CLASSROOM TIMETABLE



	MONDAY	TUESDAY	WEDNESDAY	THURSDAY	FRIDAY
3A		Food	AUSLAN Art		Sport
3B		Sport	AUSLAN Art		Food
3C		Sport	AUSLAN Art		Food
3D		Art	AUSLAN	Sport	Food

## TERM 1 IMPORTANT DATES

Week 3  
13th February NO SCHOOL Curriculum Day  
Week 4  
18th February - Meet and Greet 4:00 - 6:00pm  
Week 6  
6<sup>th</sup> March - Cross Country  
Week 7  
9<sup>th</sup> March - NO SCHOOL Public Holiday  
Week 7-8:  
NAPLAN  
Week 9:  
Year 3 Quantum Excursion  
Week 10  
2nd April - Last day of term 1 2:15pm Finish

## HOMework

Please refer to the Home Learning Diary for ideas to support learning at home.

Students are encouraged to read at least 3 nights a week for about 15mins. Please support them to identify & blend sounds to read unfamiliar words. Additionally, to enhance comprehension, there are questions located in the student diary to ask after reading.

While Mathematics homework ideas can be found in the diaries, we will be setting up our Mathletics or Mathseeds classes and allocating work for students who are able to complete them at home.

Thank you for your support and if you have any questions please contact your classroom teacher.

