

# PARENT PLANNER

## TERM 1 2026



YEAR  
2

## WELCOME TO TERM 1

We are thrilled to welcome you back for 2026.

This term we will share pictures of the students work on Seesaw for you to see. We have many fun classroom activities planned, and we have Meet the Teacher Day where we can meet and set goals together to help our students.

## MEET THE TEAM

Emma Bernardone  
Team Leader  
2B Room 32  
emma.bernardone  
@education.vic.gov.au



Emma Conley  
2E Room 30  
emma.conley@education.vic.  
gov.au



Sarah Papadopoulos  
2F Room 29  
sarah.papadopoulos2  
@education.vic.gov.au



Paul Kearney  
Learning Specialist  
Paul.Kearney@education.vic.  
gov.au



## Classroom Teachers

Courtney Leatham  
2D Room 34  
courtney.leatham@  
education.vic.gov.au



Sharon Morogi  
sharon.morgoi@education.  
vic.gov.au



### Sharing with:

Veda Firth  
veda.firth@education.  
vic.gov.au



Jessica Curtis  
3B Room 19  
Jessica.curtis@education.  
vic.gov.au



# IMPORTANT REMINDERS

## ATTENDANCE

Students are expected to be at school every day unless they are sick.

Parents are asked to record absences via the Compass Parent Portal, email the school email account, call the office or provide a note explaining the reason for the absence.

## UNIFORM

Uniform must be worn in full every day. Students not in uniform may be asked to change at the office in the morning. Please refer to the Uniform Policy on our website.

Our uniform supplier is PSW. You can shop in Campbellfield, online, arrange home delivery or click and collect.

<https://www.psw.com.au/schools/wallan-primary-school.html>

Families may choose to purchase generic uniforms from department stores.

## LATE ARRIVALS

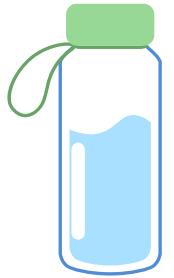
School gates open at 8:30am and classrooms are open at 8.45am. Students are expected to be at school on time, every day, to ensure they do not miss the beginning of the learning focus.

If your child is late to school, a parent/guardian must walk them to the office and sign them in.

## WATER BOTTLES

Students are required to bring their own water bottle and water can be consumed at any time during the day.

Food and non water drinks can only be consumed at designated eating times.



## SUN SMART

Wide brimmed, legionaries or bucket hats must be worn from 15th August to 30th April. Generic hats can be worn as long as they are a sun smart style – no caps. Students without hats must stay under shaded areas.

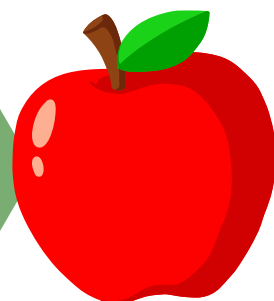
Staff are expected to model sun smart behaviours at all times. Sun cream is encouraged but must be applied by students independently.



## HEALTHY SNACK

Healthy snacks can be consumed in the classroom at a suitable time, decided upon by the teacher.

Healthy snacks include fruit and vegetables that can be eaten easily whilst students work.



# VISUAL ART

During Term 1, students are learning about the Chinese New Year - the year of the horse. They will learn how to make paper cup horse puppets. Next they will explore sculpture through drawing and making clay owls.

Please remember to bring in a clearly named art smock for those messy lessons.



# PHYSICAL EDUCATION

The focus in PE for this term is leaping and kicking.

Students will be continuing to learn and practise their ability to leap through minor team games and skill-based activities. Later in the term, students will begin working on how to kick by playing soccer like games and practising an assortment of kicking drills.



# SPECIALISTS



# BUSH

This term we will be looking at several multicultural celebrations that are celebrated by our students, including Waitangi Day, Holi, St Patrick's Day, Harmony Day, Ramadan and Eid. We will also be talking about fire safety, Sunsmart, and worm farms and compost heaps. We will also be participating in Clean Up Australia Day.



# AUSLAN



During this term students will be learning simple Auslan signs including greetings, colours, numbers to 10 and the alphabet. They are beginning to understand that Auslan is a real language with its own culture and are practising through fun games and activities in collaboration with their peers



# PERFORMING ARTS

This term, students are exploring where they experience music and how it is used across different cultures and communities. They will develop listening skills, experiment with musical elements, and improvise or compose their own music. Students will also share their music-making with others, building confidence and creativity.

# THIS TERM IN.....



## NUMERACY

This term in Mathematics, students will build a strong understanding of numbers by exploring place value for numbers up to at least 1,000, including the role of zero. They will use hands-on materials to help them recognise, represent and order numbers with confidence.

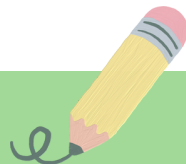
Students will also begin learning how to add and subtract numbers using a range of strategies. In addition, they will explore measurement by comparing the length, mass and capacity of everyday objects using informal units such as blocks and other classroom materials.

## CORE LITERACY



This term in Literacy, students will continue developing their reading and spelling skills through the Little Learners Love Literacy program. They will focus on long vowel sounds, beginning sounds, and common letter patterns such as digraphs and trigraphs.

Students will practise correct letter formation using dotted thirds and build reading fluency and understanding through activities such as echo, choral and partner reading. Families are encouraged to support learning by reading regularly at home with their child.



## ENGLISH

In English this term, students will read and study four different texts: Under the Southern Cross, The First Scientists, The Shop Train and The Fabulous Friend Machine. Through these informative and imaginative texts, students will build their understanding of vocabulary, spelling and narrative structure. They will also develop their ability to write clear, descriptive and complete sentences.

## INQUIRY



In Inquiry this term, students will explore our first topic, Managing Self. They will learn about the skills needed to be effective self-managers and how these skills support the development of their identity.

Students will practise managing strong emotions, understanding consent, and resolving conflict in different situations. They will also explore signs in the community that help keep people safe, offer strategies to help a character solve a problem, and design their own sign to show how challenges can be overcome.

# CLASSROOM TIMETABLE



	MONDAY	TUESDAY	WEDNESDAY	THURSDAY	FRIDAY
2A	Visual Arts	Performing Arts Auslan PE	Bush		
2B		Performing Arts & Auslan	Bush PE	Visual Arts	
2C		Performing Arts & Auslan Bush		PE	Visual Arts
2D		Performing Arts & Auslan Visual Arts	PE Bush		
2E		PArts & Auslan	Bush PE	Visual Arts	
2F	Visual Arts	PArts & Auslan	Bush PE		

## TERM 1 IMPORTANT DATES

Week 3  
13th February NO SCHOOL Curriculum Day

Week 4  
18th February - Meet and Greet 4:00 - 6:00pm

Week 6  
6<sup>th</sup> March - Cross Country

Week 7  
9<sup>th</sup> March - NO SCHOOL Public Holiday

Week 7-8: NAPLAN

Week 10  
2nd April - Last day of term 1 2:15pm Finish

## HOMework

In the early years, the objective of homework is to practise and consolidate concepts introduced during class time.

All students will be provided with a Wallan PS school diary. These will be coming home in shortly. Each student can use their diary to record all their nights reading and the wonderful books they are reading. The diary also contains activities and tasks families can use to complete homework.

**Reading** - decodable texts that are read every night and signed by adult in Student Learning Diary. Books are changed weekly.  
**Numeracy** - complete set tasks on Mathseeds, 10 minutes at least 3 times per week.

