

# PARENT PLANNER TERM 1 2026



## FOUNDATION

## WELCOME TO TERM 1

Welcome to Term 1. We trust you had a restful and enjoyable holiday. This year promises to be an enriching and productive journey for all of us. Our focus will be to guide your child toward becoming an independent and responsible learner, while encouraging them to make thoughtful choices. To ensure a smooth start to the day, Foundation rooms operate with a "Drop Off and Go" policy, allowing students to settle in easily. Please support your child by offering a quick goodbye in the morning.

We can't wait for an exciting year ahead! On the following pages you will find information and reminders for Term 1. If you have any questions throughout the year please reach out to your child's teacher.

## MEET THE TEAM

Esma Cay  
FA Room 1  
[esma.cay@education.vic.gov.au](mailto:esma.cay@education.vic.gov.au)



Amy Ilic  
FC Room 3  
[amy.ilic.education.vic.gov.au](mailto:amy.ilic.education.vic.gov.au)



Aimee Anderson  
FB Room 2  
[aimee.anderson@education.vic.gov.au](mailto:aimee.anderson@education.vic.gov.au)



Erin Cooper  
FD Room 4  
[erin.cooper2@education.vic.gov.au](mailto:erin.cooper2@education.vic.gov.au)



Katelyn Shephard  
Learning Specialist  
[katelyn.shephard@education.vic.gov.au](mailto:katelyn.shephard@education.vic.gov.au)



## ATTENDANCE

Students are expected to be at school every day unless they are sick.

Parents are asked to record absences via the Compass Parent Portal, email the school email account, call the office or provide a note explaining the reason for the absence.

## UNIFORM

Uniform must be worn in full every day.

Students not in uniform may be asked to change at the office in the morning. Please refer to the Uniform Policy on our website.

Our uniform supplier is PSW. You can shop in Campbellfield, online, arrange home delivery or click and collect.

<https://www.psw.com.au/schools/wallan-primary-school.html>

Families may choose to purchase generic uniforms from department stores.

## LATE ARRIVALS

School gates open at 8:30am and classrooms are open at 8.45am. Students are expected to be at school on time, every day, to ensure they do not miss the beginning of the learning focus.

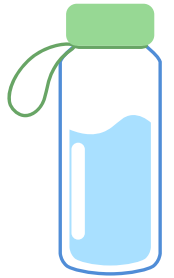
If your child is late to school, a parent/guardian must walk them to the office and sign them in.

# IMPORTANT REMINDERS

## WATER BOTTLES

Students are required to bring their own water bottle and water can be consumed at any time during the day.

Food and non water drinks can only be consumed at designated eating times.



## SUN SMART

Wide brimmed, legionaries or bucket hats must be worn from 15th August to 30th April. Generic hats can be worn as long as they are a sun smart style – no caps. Students without hats must stay under shaded areas.

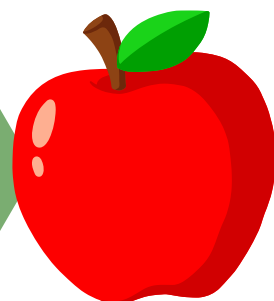
Staff are expected to model sun smart behaviours at all times. Sun cream is encouraged but must be applied by students independently.



## HEALTHY SNACK

Healthy snacks can be consumed in the classroom at a suitable time, decided upon by the teacher.

Healthy snacks include fruit and vegetables that can be eaten easily whilst students work.



# VISUAL ART

This term in Art, Foundation students will learn the routines of the art room, including how to move safely, follow procedures and care for materials. They will explore a variety of art materials while creating artworks using shapes and colours to make pictures. Students will also engage with art and cultural experiences from different people and communities through hands-on art activities.

Please remember to bring in a clearly named art smock for those messy lessons.



# PHYSICAL EDUCATION

This term in PE, students are learning about the rules we follow in lessons, how to be a kind and supportive teammate, and how to show good sportsmanship. They are also learning how to throw a bean bag using an underarm action, practise running in a straight line as fast as they can and develop the correct body position for safely catching a bean bag that is thrown to them.



# SPECIALISTS



# BUSH

This term we will be looking at several multicultural celebrations that are celebrated by our students, including Waitangi Day, Holi, St Patrick's Day, Harmony Day, Ramadan and Eid. We will also be talking about fire safety, Sunsmart, and worm farms and compost heaps. We will also be participating in Clean Up Australia Day.



# AUSLAN



This term, students are learning basic signs like hello, goodbye, please, and colours, using their dominant hand to build confidence and accuracy in communicating with others.

# PERFORMING ARTS

This term, students are exploring music in everyday life—at school, home, and in their community. They will sing with pitch awareness, respond to beat and rhythm, and experiment with different sounds. Using their imagination, they will improvise, create music, and play instruments to share their ideas and experiences.



# THIS TERM IN FOUNDATION



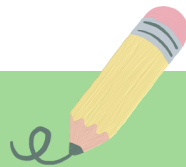
## NUMERACY

In Numeracy this term students will have a primary focus on place value. We will initially recognise numbers to 10. We will then move on with a focus around the days and months, and sequencing of events and finish the term looking at shapes.

## CORE LITERACY



In Core Literacy this term, we will work through the Little Learners Love Literacy program which focuses on teaching children the 44 sounds of the English language and the principles of the alphabetic code (that each speech sound can be represented by different groups of letters) in seven carefully sequenced stages. We start with teaching the simple code, focusing on phonics and phonemic awareness to build the strongest foundations for reading and spelling success



## ENGLISH

In English this term, we will we will also focus on building vocabulary and oral language skills to develop equally strong foundations for comprehension and writing. We will explore how talking, reading and writing are connected.

## INQUIRY



In Inquiry this term, our topic is Me and My Community where we will be learning about ourselves and the people in our community who are there to help us. We will also have our play-based learning centres such as a doctor's surgery, dentist, home corner, puzzles to support positive attitudes to learning and further develop our co-operative skills.

# SPECIALIST TIMETABLE



	MONDAY	TUESDAY	WEDNESDAY	THURSDAY	FRIDAY
FA	Visual Art	PE		Bush	Performing Arts/Auslan
FB	PE	Visual Art		Bush	Performing Arts/Auslan
FC	Visual Art	Bush		PE	Performing Arts/Auslan
FD	Visual Art			Bush	Performing Arts/Auslan PE

## TERM 1 IMPORTANT DATES

Week 3  
13th February NO SCHOOL Curriculum Day

Week 4  
18th February - Meet and Greet 4:00 - 6:00pm

Week 6  
6<sup>th</sup> March - Cross Country

Week 7  
9<sup>th</sup> March - NO SCHOOL Public Holiday

Week 7-8: NAPLAN

Week 10  
2nd April - Last day of term 1 2:15pm Finish

## HOMework

In the early years, the objective of homework is to practise and consolidate concepts introduced during class time.

All students will be provided with a Wallan PS school diary. These will be coming home shortly. Each student can use their diary to record all their nights reading and the wonderful books they are reading. The diary also contains activities and tasks families can use to complete homework.

**Reading** - decodable texts that are read every night and signed by adult in Student Learning Diary. Each class will be swapping books every Friday for the following week.

