



"Working Together for a Better Future"

| Monday 2nd March |

TERM 1 2026 |

www.wallanps.vic.edu.au |

PH:5783 1232

School Dates:

Friday 6th March
House Cross Country
DRESS IN HOUSE
COLOURS

NAPLAN YR 3 & 5
11th - 23rd March

Friday 20th March
Harmony Day
WEAR ORANGE OR
YOUR CULTURAL
DRESS

Monday 9th March
Public Holiday
NO SCHOOL

Tuesday 31st March
School Photos

Whole School Assembly
& Student Leaders
Badge Ceremony
Thursday 2nd April
9:00 am

Final day of school
Thursday 2nd April
2:15 pm finish

Term 2 Day One
Monday 20th April

Dear Families,

Staff Learning - recent curriculum day

Curriculum Day Focus:
Trauma-Informed Practice

During our recent curriculum day, our staff engaged in professional learning focused on trauma-informed practice, delivered by Beth Guy, Student Support Services Branch Manager from the Department of Education.

Beth brought a wealth of knowledge and experience, supporting our team to deepen their understanding of how students' experiences can influence learning, behaviour and wellbeing. The day provided a valuable opportunity for teachers and education support staff to come together, reflect on the needs of students in their classrooms, and explore practical strategies to support every learner to experience success.

A key focus of the learning was the importance of **co-regulation**. How adults can support students in understanding and managing their emotions so they can fully engage in learning. By explicitly teaching and modelling regulation strategies, we are helping students add important tools to their "backpack" and equip them with skills they can use both at school and beyond.

Opportunities like this strengthen our shared approach across the school and ensure we continue to create calm, supportive learning environments where students feel safe, connected and ready to learn.



Check our website for more dates.

PLEASE CHECK COMPASS FOR MORE INFORMATION.



Parent Information Session – Coming in March

As a follow-up to this learning, we will also be hosting an online parent forum one evening in March. Families across our Mitchell and Murrindindi network will have the opportunity to join a 30-minute parent tip session from the comfort of their own home, focused on supporting children's wellbeing and regulation.

Further details, including the date and access link, will be shared with families soon. We encourage all parents and carers to join us for this practical and informative session.

Why Row Seating at Wallan Primary School?

We've introduced row seating to reduce cognitive load and maximise focus. When distractions are minimised, working memory is freed up for learning.

- ✓ Clear attention during explicit teaching
- ✓ Stronger independent thinking
- ✓ Smoother routines and transitions
- ✓ Purposeful collaboration when planned

A calm environment supports strong learning. Sometimes small shifts make a big impact. You may start to see this across many classrooms as we move into this learning space.

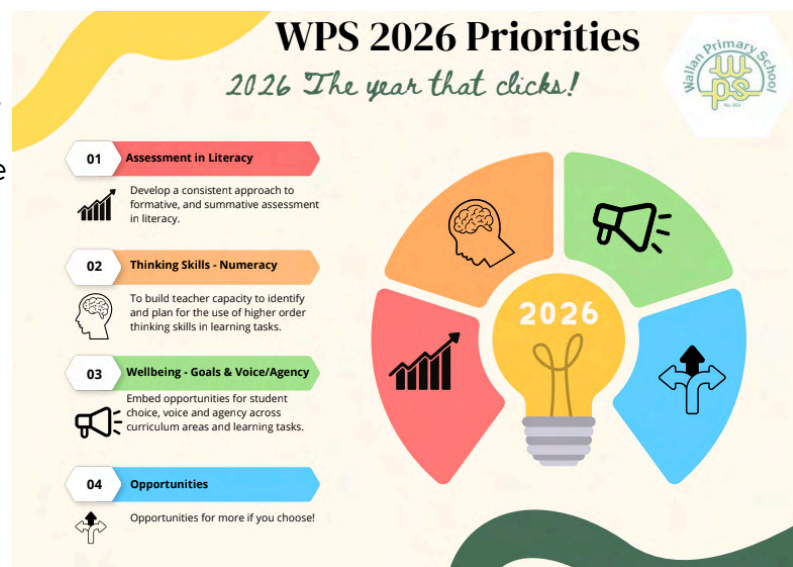
Our 2026 Annual Implementation Plan (AIP)

Each year, our school develops an Annual Implementation Plan (AIP) which outlines the key improvement priorities we will focus on to continue strengthening learning, wellbeing and outcomes for all students.

The AIP is part of the Department of Education's school improvement process and is directly linked to our School Strategic Plan (4-year plan). It helps guide our work throughout the year by identifying clear goals, actions and measures of success that support both student learning and wellbeing.

Our 2026 catch phrase is *'2026 - the year that clicks'* as we have been laying the foundations for the past few years, and now it is time for the puzzle pieces to click together.

A visual overview of our 2026 focus areas is shown in the image above. Families who would like to learn more are welcome to view the full Annual Implementation Plan on our school website. We value working in partnership with our community and look forward to continuing this important work together throughout the year.



School Council Update - 2026

We have now completed our School Council nomination process for 2026. This year, we had three parent vacancies and are pleased to share that we received three parent nominations, meaning no election process was required.

We would like to warmly welcome **Liarna, Oluka and Dean** back to the School Council and thank them for their willingness to support our school community in this important role. Our School Council will hold its first meeting of the new group in March, where members will elect the School Council President for 2026.

We thank all members of our community who continue to support the work of the School Council and contribute to the ongoing success of our school.

PARENT REMINDERS: Approaching Staff Outside of School

Respecting Professional Boundaries in Our Community

As a small and close-knit community, it is wonderful that families often see members of our school team out and about locally. Our staff value being part of the community and the positive relationships we share with families.

We kindly ask that any school matters or concerns be communicated through appropriate school channels rather than approaching staff in public settings or outside of school hours. This helps ensure conversations remain respectful, private and focused, and allows staff to respond professionally with the appropriate information and support.

If you have a question or concern, please contact the school office or arrange a meeting so we can support you as best we can. Thank you for your ongoing support in helping maintain respectful and professional boundaries for our staff and school community.

Respectful school communities start with respectful behaviour

Parents, carers, staff and students can help keep our school community safe, supportive and respectful.

Good relationships are based on:

- Open and honest communication
- Trust and respect
- Working together
- Fair and reasonable expectations by all

These behaviours are **not** okay in our school community:

- Threats
- Violence
- Rudeness
- Harassment
- Discriminatory and derogatory comments
- Aggression
- Intimidation
- Threatening gestures

This includes in-person, over-the-phone, email, text message, social media and online platforms.

For more information ask your school about the **Respectful Behaviours within the School Community Policy**.

THE EDUCATION STATE | VICTORIA Department of Education

PARENT REMINDERS: Annual privacy reminder for our school community

Our school collects and uses student and parent personal information for standard school functions or where permitted by law, as stated in the [Schools' privacy policy](#) and the [Schools' privacy collection notice](#).

Our Photographing, Filming and Recording Students policy, describes how we collect and use photographs, video and recordings of students. The policy also explains when parent consent is required and how it can be provided and withdrawn. This can be found on our website.

We ask parents to also review the guidance we provide on how we use [Google Workspace for Education](#) safely at the school and what parents can do to further protect their child's information. If after reviewing the guidance, you have any questions or concerns regarding your child using Google Workspace for Education, please contact the school.

For more information about privacy, refer to: [Schools' privacy policy: information for parents](#). This information is also available in eleven community languages: Amharic, Arabic, Chinese, Dari, Gujarati, Mandarin, Somali, Sudanese, Turkish, Urdu, Vietnamese

BUILDING WORKS UPDATE: Accessible Building Program Works at Our School

We are pleased to share that our school has been successful in receiving funding through the Accessible Buildings Program (ABP). This grant will support important building improvements to ensure all students can safely and independently access our learning environments.

These works are being completed to support one of our current students who uses a wheelchair, while also improving accessibility for future students, families and community members.

The planned upgrades include:

- Installation of ramps from the gazebo area down to the basketball court
- A new ramp near the oval area
- Automation of selected doorways, including the accessible toilet entrance
- Creation of an accessible car park within the staff car park
- Modifications to the Hub, including a ramp to improve student access to our wellbeing space



As construction begins, we are working closely with the appointed company to ensure safety remains our highest priority. During this time, you will notice temporary fencing around work areas and limited access to some school gates and pathways.

We appreciate your patience and understanding while these important improvements take place. These upgrades will help ensure our school remains an inclusive environment where every student can access learning and support spaces safely.

MEDICAL UPDATES - HEAD LICE

We understand how frustrating head lice can be for families, particularly at the start of the school year. Head lice are common in primary schools and spread easily through close contact between children. While we encourage students with long hair to have it tied back where possible, managing head lice is a shared responsibility, and we ask families to regularly check and treat their child's hair if lice or eggs are found.

We will send a reminder to families to complete regular head checks to help minimise the spread.

REMINDERS: ROAD SAFETY TIPS

As a school community, we're committed to supporting safe travel habits from the very beginning of primary school. Through the TAC's Safe Migration Project, we'll be sharing practical tips and resources with parents and carers to support you and your children to travel safely to and from school, whether by walking, riding, scootering, or driving. We encourage you to take a look at the fun and engaging resources on offer, designed to spark important conversations about safe travel to and from school. You can watch the [TAC's Safe Migration video here](#). Click here to read the [fact sheet](#) (available in multiple languages) for easy to follow safe travel tips.



REMINDERS: BIKE SAFETY TIPS

Thank you to our community for your support in ensuring that electric scooters and e-bikes are not brought onto the school site. Your cooperation helps us maintain a safe environment for all students.

As a reminder, safety remains our priority. **Any student riding a bike or scooter to and from school must wear a helmet**, in line with road safety requirements and school expectations.

Over the coming weeks, the school will follow up with families as needed to support adherence to these guidelines. We appreciate your continued partnership in keeping our students safe.

Student Leaders

Student Leadership at Our School

Student leadership plays an important role in primary school, providing opportunities for students to develop confidence, responsibility and voice within our school community. At our school, we are proud to offer a range of leadership structures that allow many students to contribute and make a positive impact.

Our **School Captains and Vice School Captains** were elected at the end of 2025 and have already begun their roles in 2026. Their responsibilities include presenting at school assemblies, attending leadership meetings, and working on upcoming projects such as student podcasts and short films designed for our school community.

Our **House Captains**, also appointed at the end of 2025, have commenced their leadership roles this year. They support house events, represent their teams and attend student leadership meetings. We are currently finalising the process of identifying our **Pink House Captains**.

Student leadership meetings are led fortnightly by Lauren Sommerhayes, where students collaborate to plan fundraising initiatives and explore ways our school can support local charities, including *Love in Action*.

Another important leadership opportunity is our **Digital Leaders**, overseen by Ben Jewell. These students represent their peers by supporting device management, promoting cyber safety, and assisting with technology across the school. The appointment process for these roles is currently underway.

Our **Wellbeing Leaders**, overseen by Esma Cay, provide valuable student voice and feedback to help develop initiatives that support student wellbeing across the school. The selection process for these positions has also begun.

In addition, our **Student Voice Leaders**, led by Emma Conley, attend fortnightly meetings where they gather student ideas, contribute to school improvement discussions, and work on key projects aligned with school priorities. These leaders are currently being selected.

All student leaders will be formally presented with their badges at our **final assembly on Thursday, 2 April at 9:00 am**. Families are warmly welcome to attend and celebrate this important milestone with us.

We look forward to seeing our student leaders grow in confidence and make a meaningful contribution to our school throughout the year.

Meet and Greet - Wednesday 18th February

It was wonderful to see so many families and students attend our Meet and Greet afternoon and evening, visiting classrooms and celebrating the positive start to Term 1. The event provided a great opportunity for families to see the learning environments, understand the expectations established in the early weeks of the term, and connect with our specialist teachers in their learning spaces. A big thank you to Jade for organising the food trucks, which added to the welcoming atmosphere and helped bring our community together.

Meet and Greet Survey Reminder

As we did last year, we are asking all families to complete our [2026 Meet and Greet Survey](#). We kindly ask that a survey be completed for each child attending Wallan PS.

This survey is a valuable opportunity for families to share their perspective on their child, including their interests, strengths, dislikes, future goals, and any areas of concern. It also allows us to ensure that our school records are accurate and up to date, including information related to diagnoses, important documentation, or court orders, where applicable.

Please ensure a survey is completed for every student, as this information greatly supports classroom teachers in getting to know and support each child effectively. The survey will remain open for one more week before closing. Please see the attached link to complete the survey. Thank you for your support.

PINK HOUSE IS ANNOUNCED!

As a school, we have been busy establishing our new Pink House, and it has been wonderful to see students' excitement as this new addition to our House system comes to life. We are finalising preparations, including printing new banners and resources to proudly represent our newest house.

Thank you to all the students who nominated themselves for Pink House. We appreciate the enthusiasm shown, and families have now been contacted to confirm student placements. Staff have also been allocated to support and lead our new house.

We look forward to seeing students proudly dressed in their house colours on Friday, 6th March, for our House Cross Country event.

HOUSE CROSS COUNTRY
WEAR YOUR COLOURS!

FRIDAY
06.03.26

WALLAN PS
Parents/Carers - If you can
volunteer contact the office.

MARRAM
RED HOUSE

NARRANG
BLUE HOUSE

GURBORRA
YELLOW HOUSE

WARIY
GREEN HOUSE

DINAWAY
PINK HOUSE

Bell Times - arrivals and pick-ups, etc

This is a friendly reminder of our school bell times and supervision arrangements to help ensure a safe and smooth start and finish to each school day.

Morning Arrival

- School gates open at 8:30 am.
- Students should arrive between 8:30 am and 8:45 am.
- School grounds are supervised by staff during this time.
- Students must be in their classrooms by 8:45 am, ready for learning to begin.
- If students arrive before 8:30 am, they must remain under the supervision of a parent or guardian, as staff supervision is not available until then.

Learning and Break Times

- Learning begins: 8:45 am (Session 1 at 8:45 am and session 2 at 9:45am)
- Fruit Break: approximately 10:00 am - *Students are encouraged to bring fruit.*
- Recess: 10:45 am – 11:15 am

- Session 3: begins 11:15 am
- Session 4: begins 12:15 pm
- Lunch Eating Time (in classrooms): 10 minutes
- Outdoor Lunch Play: 1:25 pm – 2:15 pm
- Final Learning Session: 2:15 pm – 3:15 pm

End of Day

- School finishes at 3:15pm.
- Gates open for parent/carer entry at 3:00pm.
- Students should be collected between 3:15pm and 3:30pm.
- School gates close at 3:30pm.

If you require care outside of these times, our before and after-school care provider, Big Childcare, offers a supervised program where students are cared for, provided with healthy food, and enjoy activities while spending time with friends. Bookings can be made directly with Big Childcare. Thank you for supporting us in maintaining safe supervision and smooth daily routines for all students.

A reminder that parents, carers and members of the community must not interact with students through school fences or gates during school hours.

This aligns with our Child Safe practices and helps us maintain a safe and secure environment for all students. If you need to contact your child during the school day, please contact the school office or wait until after school dismissal. Money, food or other items must not be passed through the fence. If you have any concerns, please raise them with the office, which will ensure they are directed to the appropriate staff member.

If individuals are observed interacting with students during school hours, the school will be required to follow its procedures to ensure student safety. Thank you for your support in helping us maintain a safe school environment for everyone.

If you need to use a toilet when at the school, adults are not permitted to use the same toilets as students. Please see the office, and they can direct you to the correct place. If you have a toddler, they can use the student toilets, but you cannot go in with them. If you need to be assisted again, see the office.

Anything But a School Backpack Day – Tuesday 17 February

Thanks to our Upper School Student Voice, we are excited to announce a fun and creative event for Term 1: Anything But a School Backpack Day! Two of our senior students proposed this idea, and we loved their initiative and enthusiasm.

On Tuesday, 17 February, students were invited to bring the contents of their school bag in anything but a bag! This was a light-hearted way to celebrate creativity, connection, and student voice at Wallan PS.

Thank you to families for your support.



COMMUNITY INFORMATION/ REMINDERS:

GREENSBOROUGH
BASEBALL CLUB

Elder Street Reserve
Watsonia

Boys & girls ages 4-17

Burras
BASEBALL & TEEBALL
ROOKIE PROGRAM

\$60
Plus Registration

Commencing
Saturday
21st Feb
6 week Program

9am to 10am
Every Saturday

All equipment provided. Participants will be grouped by ability for safety.
For more info contact kenleesa@bigpond.com or visit our facebook page at facebook.com/burrabaseball

DOC
FOOTBALL ACADEMY

DOC SOCCER TERM 2
OUR LADY OF THE WAY AFTER SCHOOL PROGRAM

**FOR BOYS & GIRLS
PREP TO YEAR 6**

The program is run in conjunction with David O'Connor and the DOC Football Academy.
Participants will receive:

- Qualified Coach for each group (maximum of 12)
- Soccer Ball (Students to bring to all sessions)
- The DOC player(s) of the week will receive a DOC PEN
- If you require additional information please contact David O'Connor at doc@docfootballacademy.com

All registrations and payments are done through DOC Football Academy.
Registrations close on Monday 20th April.

Sessions will incorporate the development of basic soccer skills plus, team building activities in a fun and safe environment.

Venue: Our Lady Of The Way School, 20 Alcantara Blvd, Wallan.
When: Wednesday 22nd April – Wednesday 17th June 2026
Time: 3.30pm-4.30pm
Cost: \$120.00 (Includes Ball) \$150.00 (Includes Ball, Cap & Tee Shirt)
Contact: To register email David at: doc@docfootballacademy.com