



"Working Together for a Better Future"

FRIDAY 10th February

TERM 1 2023

www.wallanps.vic.edu.au

PH: 5783 1232

School Dates:

Monday 13th Feb

- Foundation Incursion RACV safety

Wednesdays in Feb

- No school for Foundation students

Fridays in Term 1

- Interschool sport Year 5/6 students
- Swimming Year 5/6 students

Monday 20th Feb

- Classroom Parent Helper Training, Register on Compass
- Mitchell Library Classroom visits begin

Tuesday 22nd Feb

- School Council Meeting

A Message from the Principal

Dear Families,

Welcome back - New School Values!

It was great to see everyone back at school this year. The excitement on the students' faces as they met their new teachers and saw the new line marking around the school was wonderful. Over the holidays we had many improvements around the school and our new gymnasium continues to develop each day.

Our teachers have spent time planning with their teams to ensure that we are targeting the teaching to suit your child/ren. We started our year with our T.E.A.M program (Together Everyone Achieves More.) Students have developed classroom expectations and begun to build strong relationships with their teachers and peers.

Our junior teachers have also spent time planning our new Little Learners Love Literacy Program which will operate in Foundation to Year 2.

As discussed late last year we completed a community, student and staff survey where the results indicated it was time to refresh our school values. Teachers looked at the information collected on our first day of school and agreed on our new values in line with our Well-being learning last year. One value covers 'self', the second covers 'others' and the third is our 'environment.' We encourage you to chat about our new values with your child/ren.

WPS SCHOOL VALUES

- Do Your Best
- Help Others Succeed
- Respect Your Environment

Monday 6th March

- Whole school House Cross Country - Dress in your colours

Tuesday 7th March

- Semper Dental Van Arrives

Monday 13th March

- No School - Public Holiday

Wednesday 15th March

- NAPLAN begins for Year 3 and 5 students

COME TO THE SCHOOL OFFICE TO GET YOUR SCHOOL COUNCIL NOMINATION FORM.



Staff Update

We would like to welcome our new teachers to Wallan Primary School in 2023.

- Lilly Matthews - Foundation
- Emma Braham - Foundation
- Cassie Laracy-Cowland - Year 1
- Emily Bullen - Year 1
- Jessica Phoenix - Year 2
- Erin Cooper - Year 2
- Molly Stevenson - Year 3
- Simon Luthi - Year 5/6

Over the holidays Mrs Thea Kruger was successful in a position at Epping Secondary College teaching maths and science which is closer to home for Thea and a passion of hers as well. We wish Thea all the best and thank her for her time at Wallan PS.

Congratulations to Tayler Gready (Fox) who is on maternity leave and welcomed the beautiful Chelsea Grace over the weekend.

We also have a few staff who have flagged their retirement for 2023.

- Jenny Bruce, our Business Manager will retire at the end of Term 2.
- Jeanette Rudd, our Literacy Leading Teacher will take long service leave for Semester 2 and then retire.
- Di Brasher, our PSD Leader will retire at the end of Term 1.

We are currently in our recruitment process for these roles as well as some more classroom teachers to support our school as our numbers grow. This will ensure a smooth transition in these roles across the year. We will celebrate these wonderful people later in the year.

School Council

On compass we have posted information regarding school council nominations. We love to have community involvement. Please keep an eye out for the nomination forms.

What is a School Council?

All government schools in Victoria have a School Council. The School Council is the group of people who are given the power to set the key directions for the school. This means that the School Council can directly influence the quality of education that a school provides to its students. The School Council also makes sure that the school is running effectively in terms of how it spends its money and the guidelines it makes for how the school is to work.



The Role of School Council

In essence, the role is one of setting the long-term future for the school and maintaining oversight of the school's operation. It is not about running the school, employing staff or assigning children to classes – that is the job of the principal.

Why join the School Council?

- ★ Being on the School Council is a great way to get involved and have a real say in what your school is doing..
- ★ Being on the School Council is a very good way to help present and future students of the school. One of the roles of the School Council is to help set the future direction for the school.
- ★ Many School Councilors have also found that their children have a greater sense of belonging within the school.

Thank you for supporting your students in their first week of school.

Kind regards,
Tanya Kirkright - Principal

COVID SAFE PRACTICE

We have had some cases of Covid reported. We encourage you to test your children if they are showing symptoms. If they test positive we recommend they stay home for the first 5 days. We continue to have hand sanitiser available and maintain classroom ventilation.

CSEF - Camps, Sports and Excursion Fund

The Victorian Government has committed to continue the initiative to ensure students can take part in school camps, sporting and excursions events. The Camps, Sports and Excursion Fund (CSEF) provides \$125 per year for eligible students. Payments go directly to the school and will be tied to the student. Families holding a valid means-tested concession card will be eligible. Full details and an application form are available at the office for families to complete. You must bring your concession card for us to take a copy of as well. If your child is new to our school, you will need to apply at our school this year. The closing date for applications is **Wednesday 22nd February**. Funds will be available in Term 2 for successful applicants.

Reminders

SCHOOL HATS:

As part of our Sunsmart Policy, all students must wear a school hat up until April and again at the end of the year. If a student does not have a hat at school they will need to stay in the allocated uncovered areas at recess and lunchtime. If you need to purchase a school hat please go to

www.psw.com.au



Conveyance Allowance

Conveyance Allowance is an allowance provided by the Department for children's transport to school. To be eligible to receive this allowance, a student must;

- Live more than 4.8 km by the shortest practicable route from the nearest school attended
- Be enrolled at the nearest government primary or secondary school, or at the nearest appropriate registered non-government school.

Please call the office to collect the appropriate paperwork.

Applications close on **Friday 3rd March 2023.**

Victorian Student pass - The Victorian Student pass provides travel for students on all metropolitan trains, trams and buses, all regional bus services and all V/Line train and coach services operating wholly within Victoria. The Victorian Student Pass is issued on a myki. Students 16 years and under, who do not wish to purchase a Student Pass are not required to obtain a VPT Student Concession card but can still get a child myki for concession travel by visiting a metropolitan premium train station, a myki-enabled staffed V/Line station, a myki retailer, visiting www.ptv.vic.gov.au, or calling 1800 800 007.

Bus Travel

Seymour Coaches require students wishing to access bus travel from WPS to WSC to be in possession of either a **Conveyance Pass** or a **MYKI Card** to board the transfer bus. Families who have been approved for a Conveyance Pass have been given a Conveyance pass on Friday 10th February. If students do not have either card they will not be able to board the bus and will be refused travel.

When students arrive at WSC they will be required to show their Conveyance Pass or tap on using their MYKI Card to board their respective bus home. Drivers will be checking Conveyance passes and MYKI Cards.



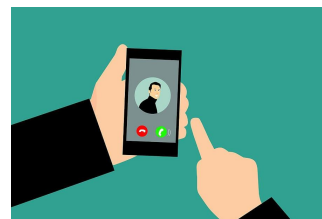
STUDENT ACCIDENTS:

A reminder to all families that the Education Department does not hold any insurance for **student accidents or ambulance transport.**



Families are responsible for paying the cost of medical treatment for injured students, including the cost of ambulance attendance/transport. Families can purchase insurance policies from commercial insurers. The Education Department does not hold any insurance for personal property brought to school by students, staff or visitors, and it has no capacity to pay for loss or damage of such property.

Family Phone Calls occurred last week however due to some staff Professional Learning some calls have been delayed to next week. By the end of next week, every family should have been contacted by the classroom teacher.



School Structure

This year we began a 60-minute session timetable structure.

- Each morning the gates open at 8.30 am.
- Staff are on Yard Duty from 8.30 am until the bells ring at 8.45 am.
- Gates are locked on the bells at 8.45 am.
- The main gate in Queen Street remains unlocked during the day, it is closed and has a pool fence-style catch.

Whole School	
8.30	Yard Open
8.45	Session 1
9.45	Session 2 & "Brain Food"
10.45	Yard time
11.15	Session 3
12.15	Session 4
1.15	Eat inside
1.25	Yard
2.15	Session 5
3.15	End of the day

- Each afternoon the gates open at 3.05 pm and close at 3.30 pm. Staff are on Yard Duty from 3.15 to 3.30 pm.
- We call a Wet Day Timetable when it is raining during timetabled yard times, sometimes they are called during the break if it starts raining. During a Wet Day Timetable, students are supervised in their classrooms for quiet play and indoor games.
- The school office is open from 8.00 am to 4.30 pm daily.
- The canteen is open for lunch orders every day of the week

FOOD Specialist - Year 3-6

We are excited to offer the new Kitchen/Garden program to our Year 3-6 students for the first time at WPS in 2023! The program aims to promote a healthy lifestyle by teaching students about the fun of getting out in the garden and preparing healthy food in the kitchen. Students will have the chance to help look after the vegetable garden and other gardens around the school, as well as learning good food hygiene and safety in the kitchen. Students are welcome to bring their own gardening gloves and apron if they prefer (please make sure these are labelled). If your child has any allergies, please make sure this information is updated on Compass.
Karen Keenan – Kitchen/Garden Specialist

NEWS from Out of School Hours Care - Big Child Care -

Big childcare Wallan had an extremely fun time on our first-ever VAC care. The children enjoyed it so much that they were asking their parents to enrol them into before and after care when school comes back. This term we started our new platform called XAP. The children are enjoying the program. They love all of the activities and the food. We started our Prep VIP program (Very important prep/person) where we have a designated educator to care for the preps and run activities for them to ensure they are settling into our program okay. They all had fun with the activities and are already making friends from other year levels.



Annual privacy reminder for our school community

Our school collects, uses, discloses and stores student and parent personal information for standard school functions or where permitted by law, as stated in the [Schools' Privacy Policy](#).

Please take time to read our school's collection notice, found on [our website](#).

We ask parents to also review the [guidance we provide](#) on how we use [Google Workspace for Education](#) safely at the school and what parents can do to further protect their child's information. If after reviewing the guidelines, you have any questions or concerns regarding your child using Google Workspace for Education, please contact the school.




For more information about privacy, refer to: [Schools' Privacy Policy — information for parents](#). This information is also available in ten community languages:

- Amharic
- Arabic
- Dari
- Gujarati
- Mandarin
- Somali
- Sudanese
- Turkish
- Urdu
- Vietnamese

PARKING around the School

Please be careful around the school. We want to ensure all our students and families are safe so please take the time to park legally around the school. It is also important for us as adults to model the correct behaviour and rules as we have little eyes watching us and learning from us all the time.

Mitchell Shire Council bylaws officers will be patrolling the school at the beginning and end of the school day and they will issue infringement fines.

	Children crossing When the flags are displayed at a children's crossing, you must stop for pedestrians who are waiting to cross or who have started crossing. You must remain stopped until the crossing is clear. These rules apply even if there is no crossing supervisor.
	No stopping No stopping means you must not stop at the kerb for any reason.
	No parking It is important that you don't park in any area where this sign is displayed.

Do you want your child to learn an instrument?

Whittlesea Music is back for 2023!

Go to our website: www.whittleseamusic.com/enrolment/

Complete the online enrolment form, ensuring you choose the correct campus, preferred lesson duration and preference of instrument.

We will then be in touch between 12-5 Monday to Friday with enrolment confirmation and to chat about your child/children's needs.